



Social, Economics, Humanities Sciences and Arts Section

Section management



Coordinator of the Social, Economics,
Humanities Sciences and Arts
Section
Corr. Mem. Ion HADÂRCĂ



Deputy coordinator
dr. hab. Aurelian DĂNILĂ



Scientific Secretary,
dr. Natalia Procop

Research fields

Economy

Sociology

Legal Science

Politology

National security

Pedagogy

Journalism

Literature

Language Sciences

History

Archaeologye

Audiovisual arts

Study of arts

Ethnology

Main institutions

1. Academy Of Economic Studies of Moldova
- 2 Academy of Music, Theater and Fine Arts
- 3 The National Museum of Ethnography and Natural History
- 4 The National Museum of History of Moldova
- 5 “Ion Creanga” State Pedagogical University of Chişinău
Institute for Research, Innovation and Technology Transfer
- 6 Moldova State University
Institute of Legal, Political and Sociological Research
Institute of History
“Bogdan Petriceicu-Hasdeu” Institute of Romanian Philology
National Institute for Economic Research
Institute of Cultural Heritage
The Central Scientific Library „Andrei Lupan”
7. Technical University of Moldova
8. Alecu Russo State University of Bălţi
9. B.P. Hasdeu State University of Cahul
10. The Gregory Tsamblak State University of Taraclia
11. Cooperative-Commercial University of Moldova
12. Free International University of Moldova

Structure of Section SEHSA

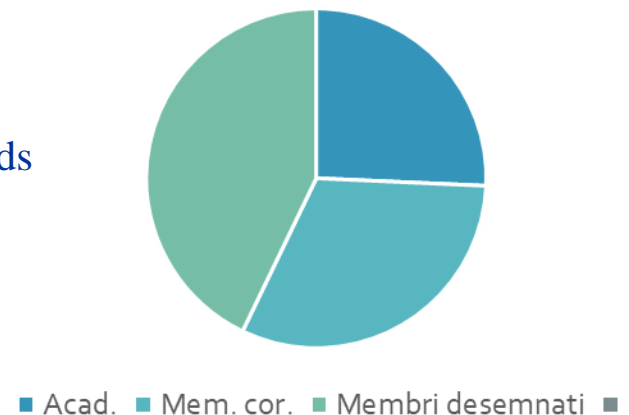
35 members:

9 academicians (literature – 1, history – 2, social philosophy – 1, political sciences – 1, law – 1, economic sciences – 1, musical art – 2);

11 corresponding members (literature – 2, history – 2, economic sciences – 3, political sciences – 2, the study of arts – 1, general pedagogy – 1);

15 honorary members (PhD and dr. hab.) (7 / 8)

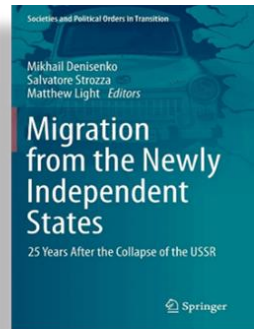
In 2023, 48 projects were running on the section research fields



Research fields: Economy, demography

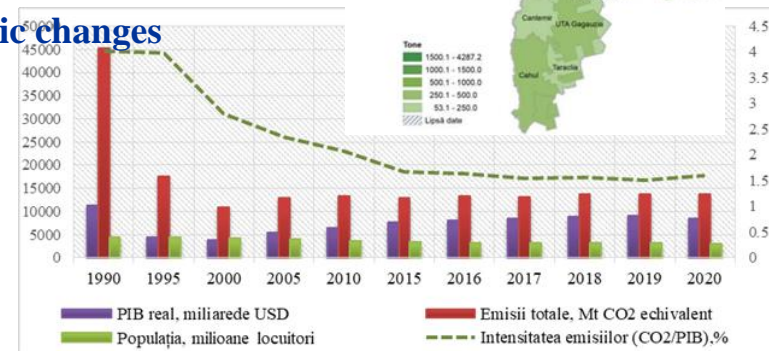
Research directions:

- Elaboration of the rates for 2023 regarding services (products) for phytotechnics and animal husbandry;
- Circular economy
- Providing solutions related to the consolidation of economic, social and cultural rights in the Republic of Moldova through the development and implementation of the budget approach based on human rights
- Analysis of the demographic situation in administrative-territorial profile for 2014-2022



Recommendation :

- **The effects of agricultural policies on the evolution of farms and markets**
- **Digital marketing - a new stage in the evolution of the modern marketing concept**
- **Improving the business environment and facilitating the development of entrepreneurship**
- **Circular economy**
- **The phenomenon of migration and sociodemographic changes**
- **Capitalizing human and social capital**
- **Social resilience**



Research fields: Legal Science, politology

Research directions:

Evaluation of the act of justice by testing the beneficiaries' satisfaction

Increasing employment and forecasting skills in fields and professions, according to the requirements of the labor market

Protection of human rights

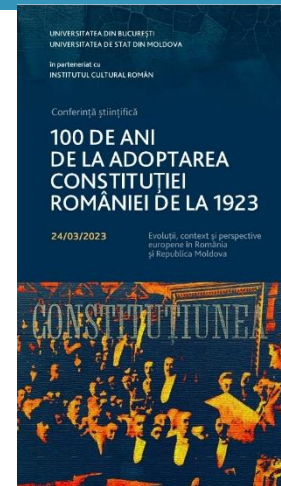
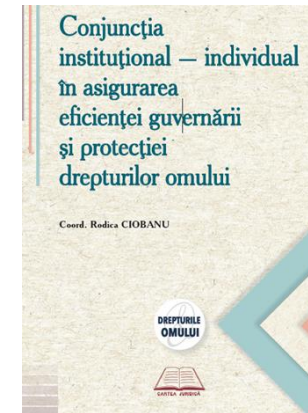
Protection of patient rights in system of compulsory medical insurance

Recommendations:

Current challenges and prospects for development in european integration process.

Consolidation of the mechanisms for the defense of human rights and the functioning capacities of state power institutions in the context of modernization needs through the development and democratization of the right to work, the right to social security.

Conceptualizing the phenomenon of symbolic politics



CRIZA DREPTULUI ÎNTRE
ASPIRAȚII DEMOCRATICE
ȘI REPERE AXIOLOGICE
[/ N] EXISTENTE

ARAMA Elena, GUCEAC Ion, CIOBANU Rodica



ASIGURAREA DREPTULUI
LA UN MEDIU SĂNĂTOS
ȘI PROVOCĂRILE
TRANZIȚIEI SPRE UE

MATERIALELE CONFERINȚEI ȘTIINȚIFICE
NAȚIONALE CU PARTICIPARE INTERNAȚIONALĂ



CRIOBANU, 2023

Research fields: Pedagogy, psychology

Research directions:

- Reconfiguring the school learning process in the context of societal challenges
- Identifying the main problems, developments and trends regarding the study of exact and natural sciences from an inter/trans disciplinary perspective (STEAM concept)
- Reducing the risks of poverty (developing resilience, training psychological skills to manage crisis situations, creating psychosocial conditions in assisting the professional path)
- Social, educational and cultural innovations for integration and adaptation



Recommendations :

- Adaptation of the educational system to the new approaches in the contemporary society
- The psycho-pedagogical bases of the creation of social inclusion and active civic attitude



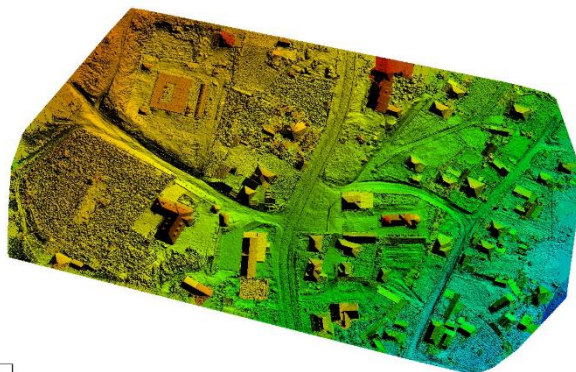
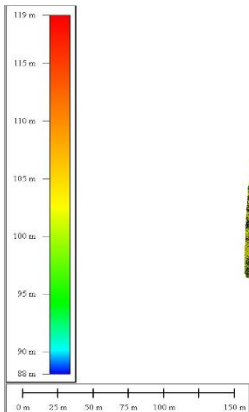
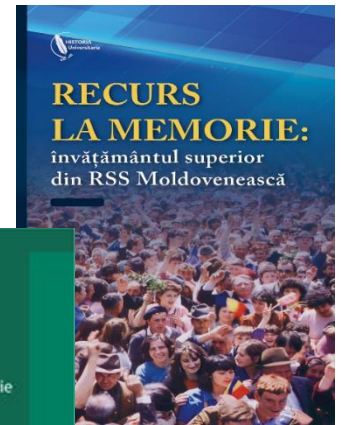
Research fields: History, archaeology

Research directions:

- The historical evolution of Moldova from ancient times to the modern era in the context of European civilization and Bessarabia within the Russian Empire
- The high school in the RSSM, the role of internal and external factors, the contribution of the main actors of the high school.

Recommendations :

- History of Moldovan-Lithuanian relations
- The role of the Church in the development of moral principles of the society
- Historical Memory culture and European commemorative policies
- Research and exploitation of the medieval archaeological heritage



Research fields: Philology

Research directions:

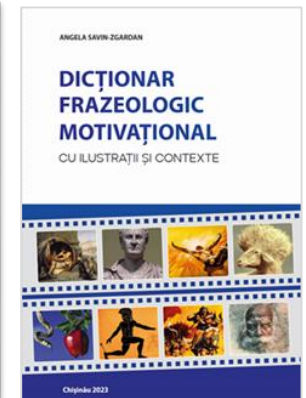
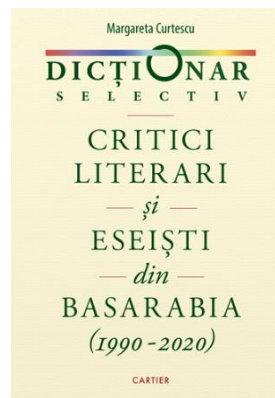
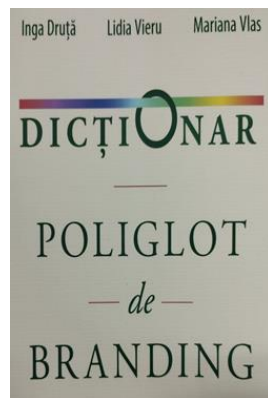
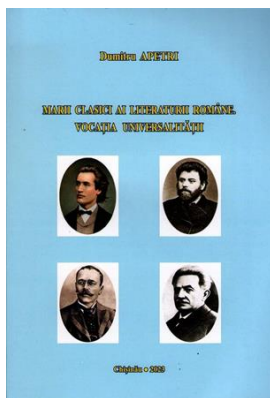
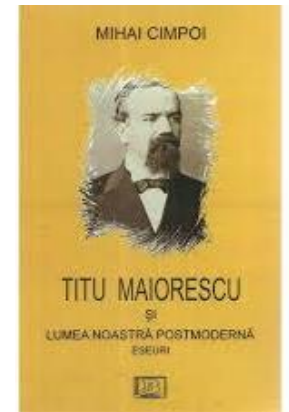
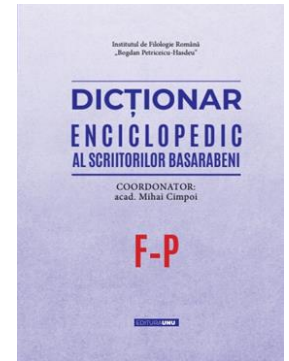
Revaluating the static element of the Romanian language, the Greek-Latin foundations in establishing the terminological profile in the Romanian language in the context of internationalization, standardization and unification of terminologies

Analysis of the literary phenomenon from the Bessarabian space of the imaginary' perspective, with the identification of recurring issues in literature after 1990

The social context of updating ethno-folkloric texts, establishing the processes, transformations and mutations involved in authentic folklore texts

Recommendations

- Establishing common ground in Moldovan-Lithuanian cultural relations



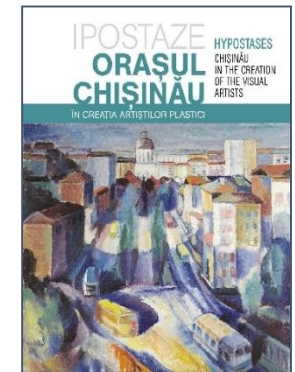
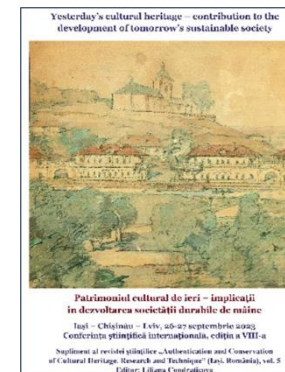
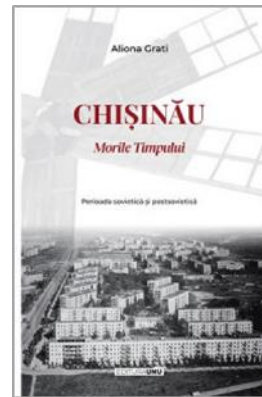
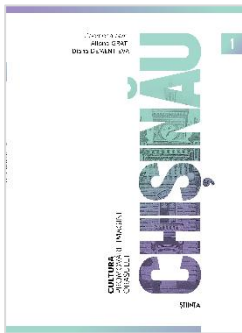
Research fields: Interdisciplinary research

Research directions:

Development and testing of a model of interdisciplinary scientific research to promote a profitable and attractive image of the cities of the Republic of Moldova through art and mythopoetic, including the development of tourist routes

Recommendations:

Social, educational and cultural innovations for integration and adaptation.
The image of freedom in painting and literature of the Republic of Moldova



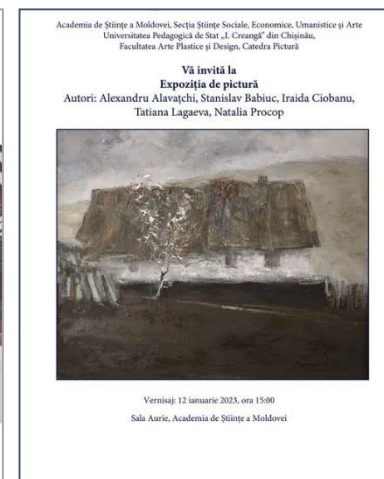
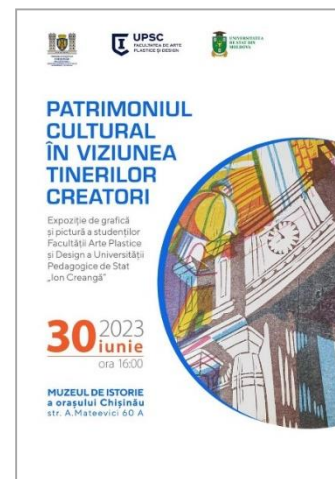
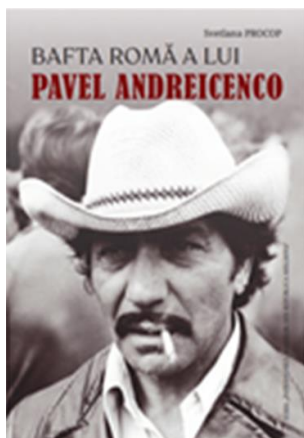
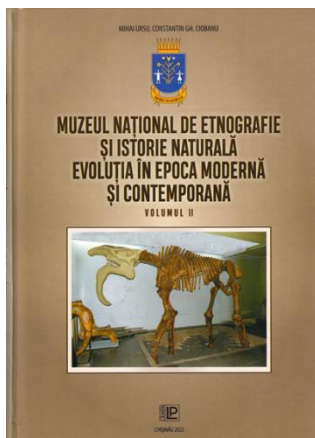
Research fields: The study of the arts

Research directions:

- Sustainable architecture, urbanism and sustainable urban development
- Scientific assessment of tangible and intangible cultural heritage
- Theoretical, scientific and information support for increasing the value of archaeological, ethnological, artistic, architectural heritage in the development and popularization of creative industries, tourism development.

Recommendations:

- Sharing the scientific research results in rural development policies in urban and in the national tourist routes
- Moldovan-Lithuanian relations in the field of visual and audiovisual arts



Contacts

Section of Social, Economics, Humanities Sciences and Arts

sectia.sseua.asm@gmail.com

Thank you!